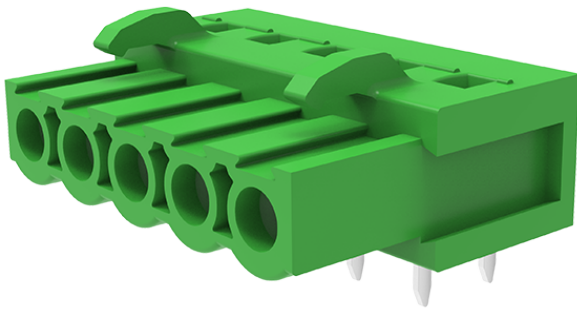


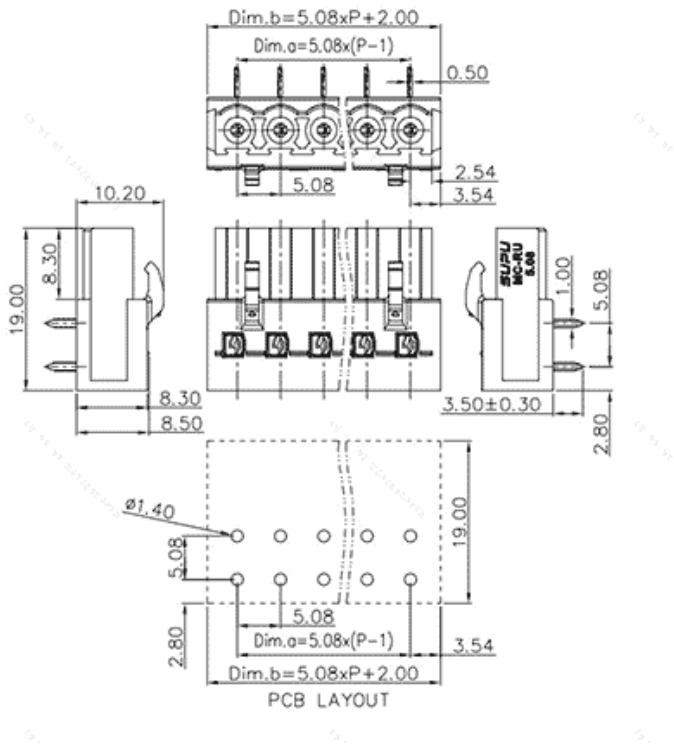
Product Type: Plug-in terminal-Plug

Product Name:MC-  
RU5.08SH07-0001



Product Description: Pitch:5.08mm Rated  
Voltage : 320V Rated Current:16A  
colour : customizable

### Product Size



### Parameters

|                       |                    |
|-----------------------|--------------------|
| SUPU ID               | MC-RU5.08SH07-0001 |
| Pitch                 | 5.08               |
| Number of levels      | single layer       |
| Number of connections | 7                  |

|                               |                                  |
|-------------------------------|----------------------------------|
| ☞ Connection method           | -                                |
| ☞ Protection Level            | IP20                             |
| ☞ Operating temperature range | -40~+105°C                       |
| ☞ Insulation material         | PA66                             |
| ☞ Insulation material group   | I                                |
| ☞ Contact material            | Copper alloy                     |
| ☞ Contact plating             | Sn,Plated                        |
| ☞ Color                       | Green/Black/Blue/Grey/Orange/Red |

## Technical data

|   |             |
|---|-------------|
| ☞ IEC Rated Current                             | 16A         |
| ☞ IEC Rated Voltage                             | 320V        |
| ☞ Overvoltage category                          | III/III/ II |
| ☞ Degree of pollution                           | 3 2 2       |
| ☞ Rated impulse voltage                         | 4KV 4KV 4KV |
| ☞ UL Rated Current                              | 16A - 10A   |
| ☞ UL Rated Voltage                              | 250V - 300V |
| ☞ Conductor cross section rigid                 | -           |
| ☞ Conductor cross section flexible              | -           |
| ☞ Conductor cross section flexible,with ferrule | -           |
| ☞ Locking screw Specification                   | -           |
| ☞ Locking screw torque                          | -           |
| ☞ Fixed Screw Specification                     | -           |
| ☞ 固定螺钉扭矩  | -           |

|                       |       |
|-----------------------|-------|
| ☞ Stripping length    | -     |
| ☞ Use group           | B/C/D |
| ☞ Rated cross section | -     |

## Commercial data

|            |                    |
|------------|--------------------|
| ☞ Order No | MC-RU5.08SH07-0001 |
|------------|--------------------|

### Ningbo SUPU Electronics Co., Ltd.

Address: No. 150, Xinxing 4th Road, High-tech Industrial Development Zone,  
Cixi City, Zhejiang Province, China

Zip code: 315303

Switchboard: +86 574-63288158

Fax: +86 574-63288170

E-mail:supucontact@supu.cn

Service Hotline: 400-626-6336



Wechat