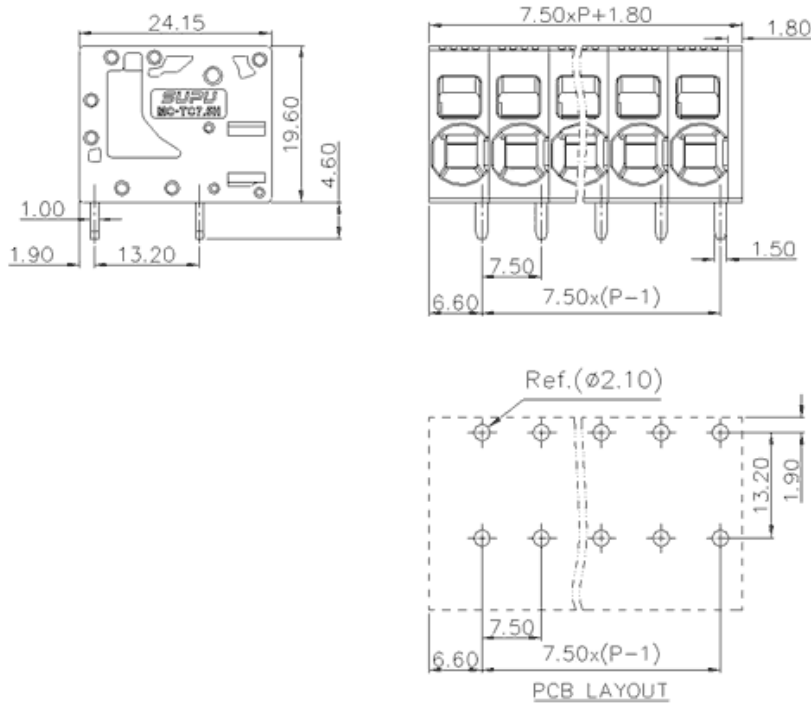


Product Type: Fixed terminal

## Product Name:MC-TC7.5H04P-0001

Product Description: Pitch:7.5mm Rated Voltage : 1000V Rated Current:41A Connection method : Push-in spring connection colour : customizable

### Product Size



### Parameters

⌘ SUPU ID	MC-TC7.5H04P-0001
⌘ Pitch	7.5
⌘ Number of levels	Single layer
⌘ Number of connections	4

☞ Connection method	Push in connection
☞ Protection Level	IP20
☞ Operating temperature range	-40~+105°C
☞ Insulation material	PA66
☞ Insulation material group	I
☞ Contact material	Copper alloy
☞ Contact plating	Sn,Plated
☞ Color	Green/Black/Blue/Grey/Orange/Red

## Technical data

☞ IEC Rated Current	41A
☞ IEC Rated Voltage	1000V
☞ Overvoltage category	III/III/ II
☞ Degree of pollution	3 2 2
☞ Rated impulse voltage	6.0KV 6.0KV 6.0KV
☞ UL Rated Current	36A 36A 5A
☞ UL Rated Voltage	300V 150V 600V
☞ Conductor cross section rigid	0.2~10mm <sup>2</sup>
☞ Conductor cross section flexible	0.2~10mm <sup>2</sup>
☞ Conductor cross section flexible,with ferrule	0.2~10mm <sup>2</sup>
☞ Locking screw Specification	-
☞ Locking screw torque	-
☞ Fixed Screw Specification	-
☞ Stripping length	13-15mm

☞ Order No

MC-TC7.5H4P-0001

Ningbo SUPU Electronics Co., Ltd.

Address: No. 150, Xinxing 4th Road, High-tech Industrial Development Zone,  
Cixi City, Zhejiang Province, China

Zip code: 315303

Switchboard: +86 574-63288158

Fax: +86 574-63288170

E-mail:supucontact@supu.cn

Service Hotline: 400-626-6336



Wechat