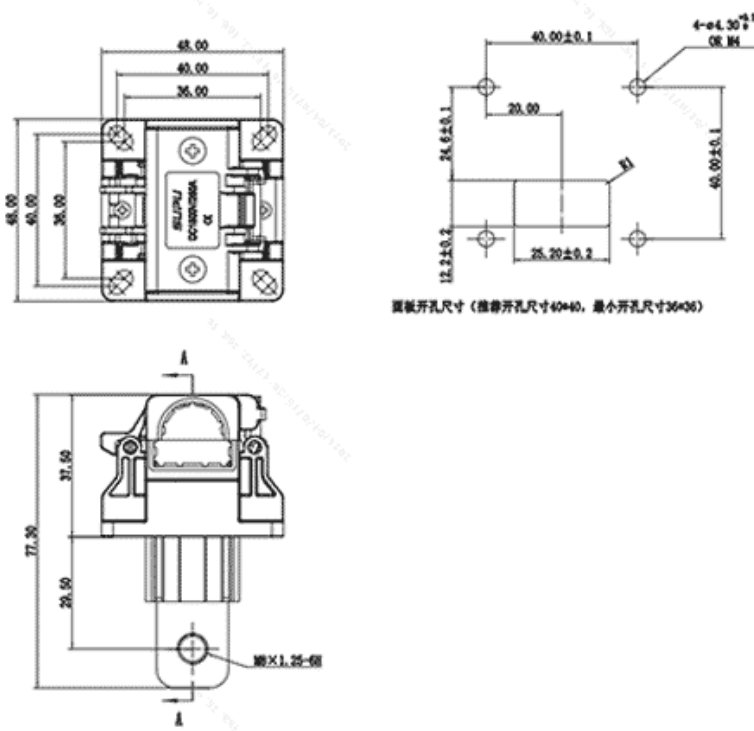


Product Type: IP20 connector

## Product Name:ESF-SU250A19Y

Product Description: Nominal operating voltage 1500V DC, Rated current 250A, Color: Orange, wiring method: screw

### Product Size



### Parameters

|                               |               |
|-------------------------------|---------------|
| ☞ SUPU ID                     | ESF-SU250A19Y |
| ☞ Connection method           | Screw thread  |
| ☞ Protection Level            | IP20          |
| ☞ Operating temperature range | -40°C~125°C   |

|                             |              |
|-----------------------------|--------------|
| ☞ Insulation material       | PA           |
| ☞ Insulation material group | III          |
| ☞ Contact material          | Copper alloy |
| ☞ Contact plating           | Ni,Plated    |

## Technical data

|   |                            |
|---|----------------------------|
| ☞ Overvoltage category                  | III                        |
| ☞ Degree of pollution                   | 3                          |
| ☞ Rated impulse voltage                 | 10KV                       |
| ☞ UL Rated Current                      | 250A                       |
| ☞ UL Rated Voltage                      | 1500V                      |
| ☞ Conductor cross section rigid         | 70mm <sup>2</sup> (AWG2/0) |
| ☞ Conductor cross section flexible      | 70mm <sup>2</sup> (AWG2/0) |
| ☞ Rated cross section                   | 70mm <sup>2</sup> (AWG2/0) |
| ☞ Can connect copper bar specifications | 18*4mm and more            |

## Commercial data

|                          |               |
|--------------------------|---------------|
| ☞ Order No               | ESF-SU250A19Y |
| ☞ Packing unit           | PCS           |
| ☞ Minimum order quantity | 1             |

## Ningbo SUPU Electronics Co., Ltd.

Address: No. 150, Xinxing 4th Road, High-tech Industrial Development Zone,  
Cixi City, Zhejiang Province, China

Zip code: 315303

Ningbo SUPU Electronics Co., Ltd.

Switchboard: +86 574-63288158

Fax: +86 574-63288170

E-mail:supucontact@supu.cn

Service Hotline: 400-626-6336



Wechat

---

Date:2026-04-27 18:35

The right to modify data belongs to SUPU.