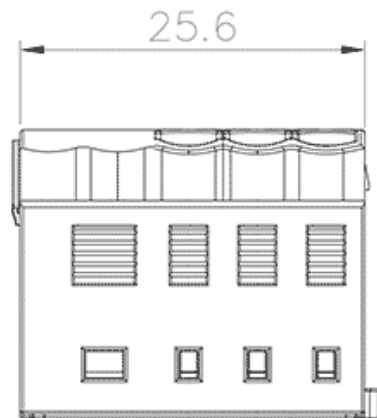
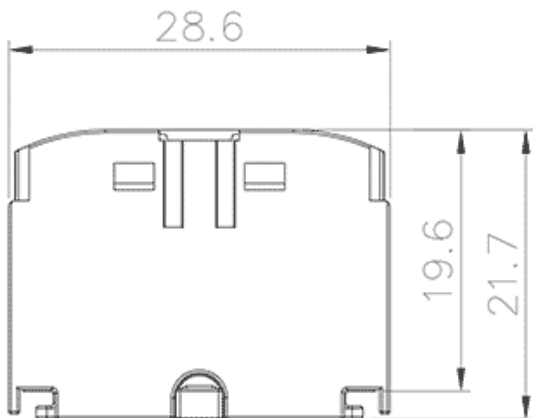


Product Type: Push-in type power distribution block

## Product Name:TPA6-2.5-7-GY-Output

Product Description: Connection method:Push-in connection, Rated Current:24A, Rated Voltage:450V, Number of connections : 7, Number of levels : 1, Cross section:0.2-4mm<sup>2</sup>, AWG:26-12AWG

### Product Size



### Parameters

⌘ SUPU ID

TPA6/2.5-7-GY

⌘ Number of levels

1

☞ Number of connections	7
☞ Connection method	Push-in connection
☞ Protection Level	IP20
☞ Insulation material	PA66
☞ Insulation material group	I
☞ Contact material	Copper alloy
☞ Contact plating	Sn,Plated
☞ Ambient temperature (operation)	-40°C~105°C
☞ Ambient temperature (assembly)	-5°C~70°C
☞ Ambient temperature (storage)	-25°C~60°C
☞ Permissible humidity (storage/transport)	30%~70%
☞ Potentials	1

## Technical data

☞ IEC Rated Current	24A
☞ IEC Rated Voltage	450V
☞ Overvoltage category	III
☞ Degree of pollution	3
☞ Rated impulse voltage	6KV
☞ UL Rated Current	20A
☞ UL Rated Voltage	300V
☞ Conductor cross section rigid	0.2-4mm <sup>2</sup>
☞ Conductor cross section flexible	0.2-2.5mm <sup>2</sup>
☞ Conductor cross section flexible,with ferrule	0.2-2.5mm <sup>2</sup>

☞ Stripping length	8-10mm
☞ Use group	B/C
☞ Rated cross section	26-12AWG

## Commercial data

☞ Order No	TPA6/2.5-7-GY
------------	---------------

### Ningbo SUPU Electronics Co., Ltd.

Address: No. 150, Xinxing 4th Road, High-tech Industrial Development Zone,  
Cixi City, Zhejiang Province, China

Zip code: 315303

Switchboard: +86 574-63288158

Fax: +86 574-63288170

E-mail:supucontact@supu.cn

Service Hotline: 400-626-6336



Wechat